

Geometry
Review - 1-1 to 1-3

Name: Key
Date: _____ Hour: _____

Directions: For the following questions please use the coordinate grid below. Please Label all points and lines on the Graph.

1. Write the coordinate point for each of the following points on the plane.

Point A: (-8, 5) Point B: (-1, -8) Point G: (7, 4)

2. Write the Quadrants that each of the following points are located.

Point D: IV Point C: III Point G: I

3. Name the intersection of Line \overline{AB} and line \overline{CD}

Point F

4. Name three collinear points.

Point C, F, D Points A, F, and B

5. Plot Point J at the coordinate (4, 3) and the Point O at the origin (0, 0). Find the distance between the set of points using the distance formula:

$$d = \sqrt{(4-0)^2 + (3-0)^2}$$

$$d = \sqrt{4^2 + 3^2}$$

$$d = \sqrt{16 + 9}$$

$$d = \sqrt{25}$$

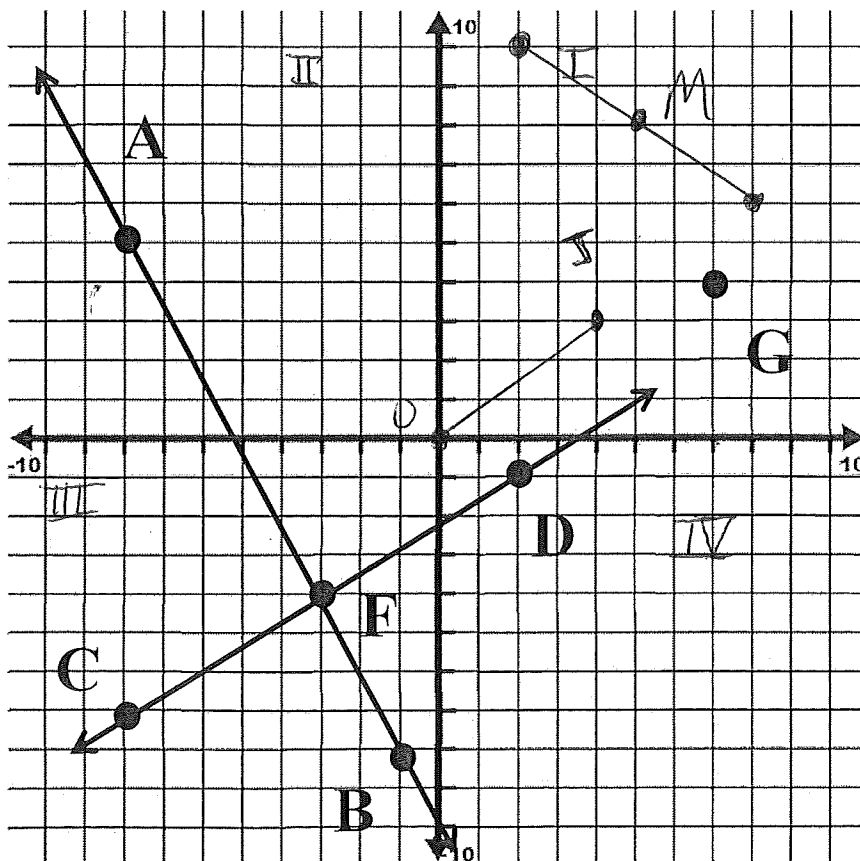
$$d = 5 \text{ units}$$

6. Plot a Point Z at the coordinate (2, 10) and a Point W at the coordinate (8, 6). Find the Midpoint between Point Z and Point W using the midpoint formula. Then plot the point on the coordinate Graph and label it M.

$$\left(\frac{2+8}{2}, \frac{10+6}{2} \right)$$

$$\left(\frac{10}{2}, \frac{16}{2} \right)$$

$$(5, 8) \text{ M}$$



Directions: For the following questions please use the diagram below.

7. Name the plane containing the Point X using two different ways.

Plane N Plane XYQ

8. Name the intersection of line n and Plane N.

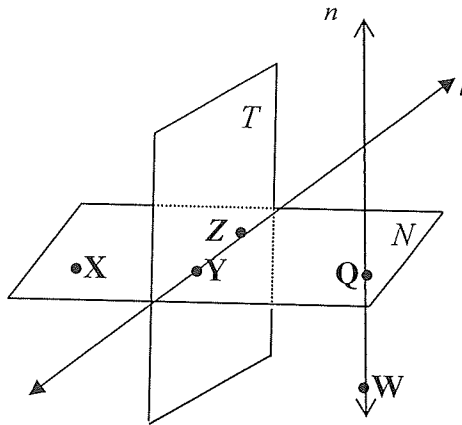
Point Q

9. Name the intersection of Plane N and Plane T.

line l line TZ

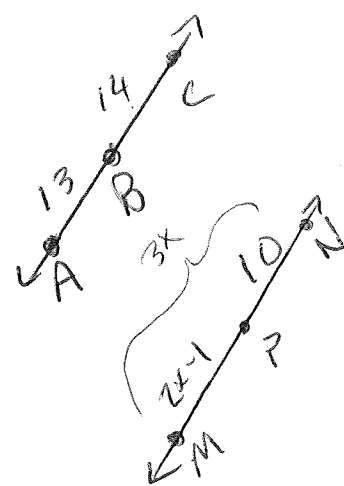
10. Name four **NON**coplanar points.

WXYZ



11. Find AC if Point B is between A and C, $AB = 13$, and $CB = 14$. (Draw it!)

$$13 + 14 = 27$$



12. P is between M and N; $MP = 2X - 1$, $NP = 10$, $MN = 3X$. Find X. (Draw it!)

$$\begin{array}{r} 2x - 1 + 10 = 3x \\ -2x \qquad -2x \end{array}$$

$$9 = X$$

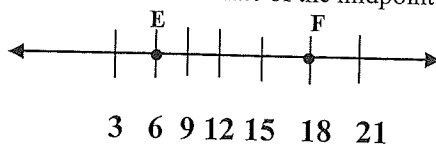
13. Segment $\overline{AB} = 23$ and Segment $\overline{DG} = 14 + x$. Find x , when Segment \overline{AB} and Segment \overline{DG} are **Congruent**.

$$\begin{array}{r} 14 + x = 23 \\ -14 \qquad -14 \end{array}$$

$$x = 9$$

14. Refer to the number line below. Find the number coordinate of the midpoint of \overline{EF} .

*the answer may or may not be shown in the drawing ☹



$$\frac{18 + 6}{2} = \frac{24}{2} = 12$$

12